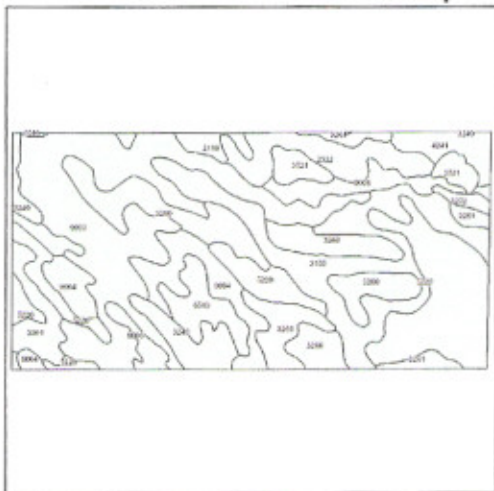


Soils Map



State: **Nebraska**  
 County: **Boyd**  
 Location: **005-034N-016W**  
 Township: **Basin**  
 Acres: **319**  
 Date: **1/7/2010**



Fsa borders provided by the Farm Service Agency as of May 23, 2008.  
 Soils data provided by USDA and NRCS.

Code	Soil Description	Acres	Percent of field	Non-irr Class	Irr Class	SRPG	Alfalfa hay	Alfalfa hay irrigated	Brome grass alfalfa	Corn	Corn irrigated	Flax	Grain sorghum	Grain sorghum irrigated	Oats	Smooth brome grass	Smooth brome grass irrigated	Soybeans	Soybeans irrigated
9003	Anselmo fine sandy loam, 11 to 20 percent slopes	67.3	21.1%	Vle	Vle	41		3											
5220	Onita silt loam, 0 to 1 percent slopes	49.5	15.5%	Ilc	I	65	2.9		4.6	57			67		70				
3155	Brocksbury fine sandy loam, 0 to 2 percent slopes	41.4	13.0%	Ile	Ile	54	1.8	5.3		34	140		44	110	32	3	10		
3260	O'Neill fine sandy loam, 0 to 2 percent slopes	38.2	12.0%	Ille	Ille	44	1.5	5		26	135		36	105	30			18	32
9004	Anselmo fine sandy loam, 3 to 6 percent slopes	21.4	6.7%	Ille	Ille	50	2.3	4.5		41	125		51	100	40				
2322	Inavale fine sand, channeled, frequently flooded	16.6	5.2%	Vlw		23													
3261	O'Neill fine sandy loam, 2 to 6 percent slopes	13.2	4.1%	Ive	Ive	42	1.3	4.6		23	128		33	95	28			14	24
9006	Anselmo fine sandy loam, 6 to 11 percent slopes	12.9	4.0%	Ive	Ive	46	1.9	3.5		33			44		30				
3240	Mariaville-Paka loams, 11 to 40 percent slopes	12	3.8%	Vle		9													
3301	Ree silt loam, 2 to 6 percent slopes	11.7	3.7%	Ille	Ille	61	1.8		3	36			45		55				
6510	Blendon fine sandy loam, 2 to 6 percent slopes	10.9	3.4%	Ille	Ille	47	1.9	4.5	3.2	50	140	13	47	110	48				
4241	Ord fine sandy loam, occasionally flooded	7.8	2.4%	Ilw	Ilw	26	3.6	5.5		55	120		60	110	40			30	45
3521	Cass fine sandy loam, occasionally flooded	7.6	2.4%	Ilw	Ilw	45	4	6.2		67	135		72	115					
3272	O'Neill-Meadin fine sandy loams, 2 to 11 percent slopes	4	1.3%	Vls	Ive	36					110								
2110	Inavale loamy fine sand, occasionally flooded	3.7	1.2%	Ive	Ille	32	1.8	5		25	100		30	80					
3225	Labu-Sansarc silty clays, 11 to 30 percent slopes	0.5	0.1%	Vls		9													
3286	Paka loam, 2 to 6 percent slopes	0.3	0.1%	Ille	Ille	63	1.8	5		25	100		50	110	50				
<b>Weighted Average</b>						<b>46</b>	<b>1.5</b>	<b>3.1</b>	<b>0.9</b>	<b>27.7</b>	<b>61.6</b>	<b>0.4</b>	<b>33.8</b>	<b>47.7</b>	<b>28.3</b>	<b>0.4</b>	<b>1.3</b>	<b>3.5</b>	<b>5.9</b>