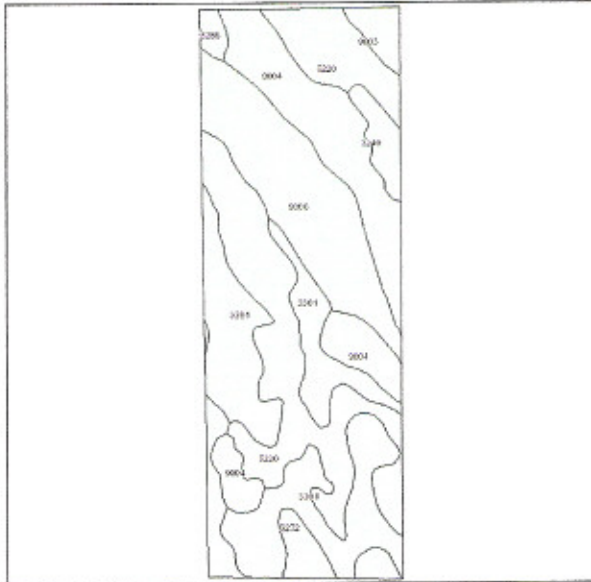


Soils Map



State: **Nebraska**
 County: **Boyd**
 Location: **008-034N-016W**
 Township: **Basin**
 Acres: **120.8**
 Date: **1/7/2010**



Maps provided by:

 ©AgriData, Inc 2008
 www.AgriDataInc.com

Fsa borders provided by the Farm Service Agency as of May 23, 2008.
 Soils data provided by USDA and NRCS.

| Code | Soil Description | Acres | Percent of field | Non-Irr Class | Irr Class | SRPG | Alfalfa hay | Alfalfa hay irrigated | Brome grass alfalfa | Corn | Corn Irrigated | Grain sorghum | Grain sorghum irrigated | Oats | Spring wheat | Winter wheat |
|-------------------------|---|-------|------------------|---------------|-----------|-------------|-------------|-----------------------|---------------------|-------------|----------------|---------------|-------------------------|-------------|--------------|--------------|
| 5220 | Onita silt loam, 0 to 1 percent slopes | 31.8 | 26.3% | IIc | I | 65 | 2.9 | | 4.6 | 57 | | 67 | | 70 | 29 | 37 |
| 3301 | Ree silt loam, 2 to 6 percent slopes | 31.2 | 25.8% | IIIe | IIIe | 61 | 1.8 | | 3 | 36 | | 45 | | 55 | 23 | 33 |
| 9004 | Anselmo fine sandy loam, 3 to 6 percent slopes | 22.3 | 18.5% | IIIe | IIIe | 50 | 2.3 | 4.5 | | 41 | 125 | 51 | 100 | 40 | | 26 |
| 9006 | Anselmo fine sandy loam, 6 to 11 percent slopes | 21.8 | 18.1% | IVe | IVe | 46 | 1.9 | 3.5 | | 33 | | 44 | | 30 | | 20 |
| 3272 | O'Neill-Meadin fine sandy loams, 2 to 11 percent slopes | 7.1 | 5.9% | VIe | IVe | 36 | | | | | 110 | | | | | |
| 3240 | Mariaville-Paka loams, 11 to 40 percent slopes | 3 | 2.5% | VIe | | 9 | | | | | | | | | | |
| 9003 | Anselmo fine sandy loam, 11 to 20 percent slopes | 2.4 | 2.0% | VIe | VIe | 41 | | 3 | | | | | | | | |
| 3286 | Paka loam, 2 to 6 percent slopes | 1.2 | 1.0% | IIIe | IIIe | 63 | 1.8 | 5 | | 25 | 100 | 50 | 110 | 50 | | |
| Weighted Average | | | | | | 54.2 | 2 | 1.6 | 2 | 38.1 | 30.6 | 47.1 | 19.6 | 45.9 | 13.6 | 26.7 |