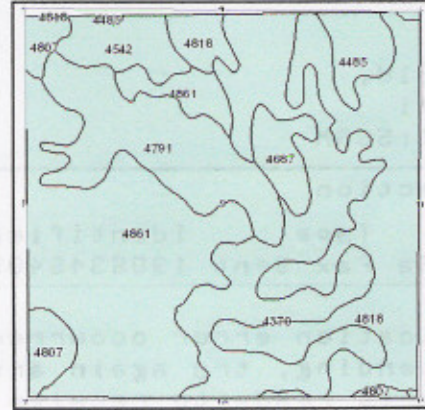
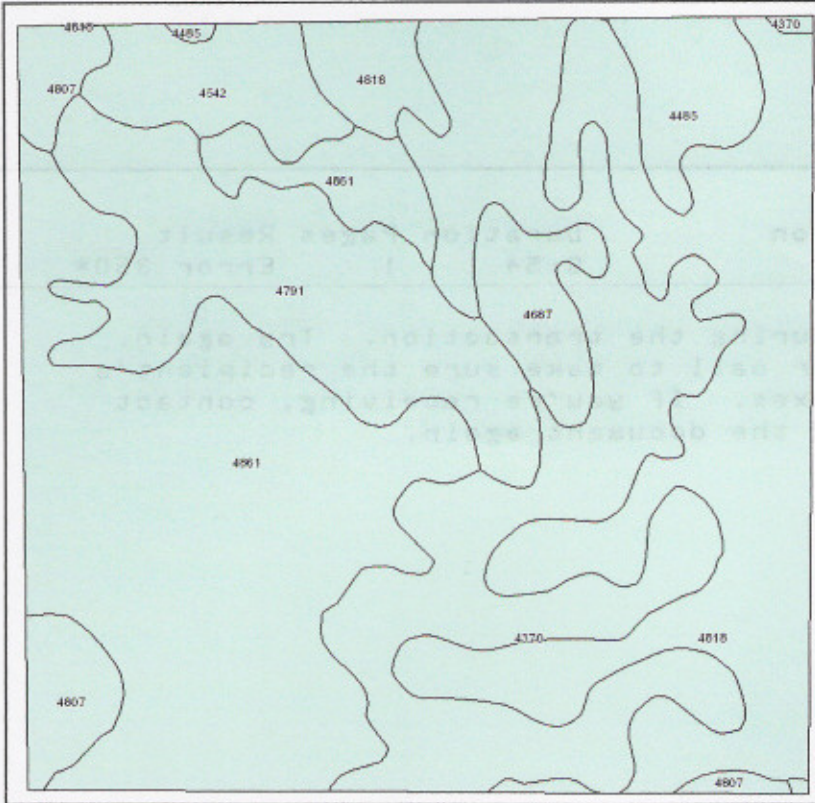


### Soils Map



State: **Nebraska**  
 County: **Rock**  
 Location: **009-026N-019W**  
 Township: **Pewaukee**  
 Acres: **634.5**



Maps provided by:  
  
 ©AgriData, Inc 2008  
 www.AgriDataInc.com

Fsa borders provided by the Farm Service Agency as of May 23, 2008.  
 Soils data provided by USDA and NRCS.

| Code                    | Soil Description                                 | Acres | Percent of field | Non-Irr Class | Irr Class | SRPG        |
|-------------------------|--------------------------------------------------|-------|------------------|---------------|-----------|-------------|
| 4861                    | Valentine-Els fine sands, 0 to 9 percent slopes  | 181.7 | 28.6%            | Vle           | IVw       | 23          |
| 4818                    | Valentine loamy fine sand, 3 to 9 percent slopes | 145.2 | 22.9%            | Vle           | IVe       | 26          |
| 4370                    | Libory loamy fine sand, 0 to 3 percent slopes    | 140.3 | 22.1%            | Ille          | Ille      | 53          |
| 4791                    | Valentine fine sand, 3 to 9 percent slopes       | 81    | 12.8%            | Vle           | IVe       | 22          |
| 4542                    | Els-lpage complex, 0 to 3 percent slopes         | 25.1  | 4.0%             | Ve            | IVe       | 26          |
| 4807                    | Valentine fine sand, rolling                     | 23.1  | 3.6%             | Vle           |           | 19          |
| 4485                    | Dunday loamy fine sand, 0 to 3 percent slopes    | 19.7  | 3.1%             | IVe           | Ille      | 31          |
| 4687                    | Marlake loamy fine sand, frequently ponded       | 18.4  | 2.9%             | Vllw          |           | 2           |
| <b>Weighted Average</b> |                                                  |       |                  |               |           | <b>29.8</b> |