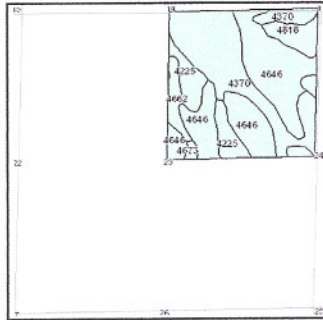
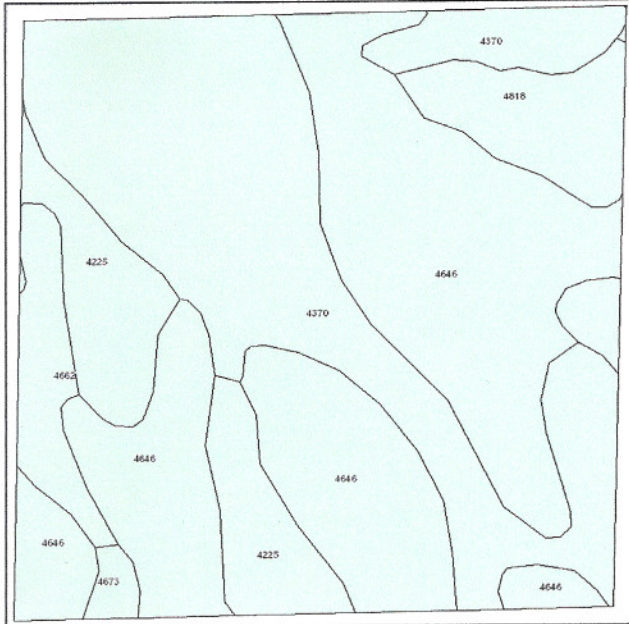


Soils Map



State: **Nebraska**
 County: **Sherman**
 Location: **023-014N-014W**
 Township: **Rockville**
 Acres: **156.8**
 Date: **11/30/2009**



Maps provided by:

 ©AgriData, Inc 2008
 www.AgriDataInc.com

Fsa borders provided by the Farm Service Agency as of May 23, 2008.
 Soils data provided by USDA and NRCS.

Code	Soil Description	Acres	Percent of field	Non-Irr Class	Irr Class	SRPG	Alfalfa hay	Alfalfa hay Irrigated	Corn Irrigated	Corn	Grain sorghum	Grain sorghum Irrigated	Soybeans	Soybeans Irrigated	Winter wheat
4646	Ipaga loamy fine sand, 0 to 3 percent slopes	67.6	43.1%	IVe	IVe	29	1.5	4.5	105	28	32	90			20
4370	Libory loamy fine sand, 0 to 3 percent slopes	53.9	34.4%	IIIe	IIIe	51	3.4	5.5	135	45	50	100	30	45	30
4225	Bolent loamy sand, occasionally flooded	16.2	10.3%	IVw	IVw	26	3.2		105	28					25
4818	Valentine loamy fine sand, 3 to 9 percent slopes	11	7.0%	VIe	IVe	27		3	90			75			15
4662	Loup fine sandy loam, 0 to 1 percent slopes	6.7	4.3%	Vw		32									
4673	Loup loam, frequently ponded	1.4	0.9%	Vw		26									
Weighted Average						36.2	2.1	4	108.8	30.4	31	78.4	10.3	15.5	22.6