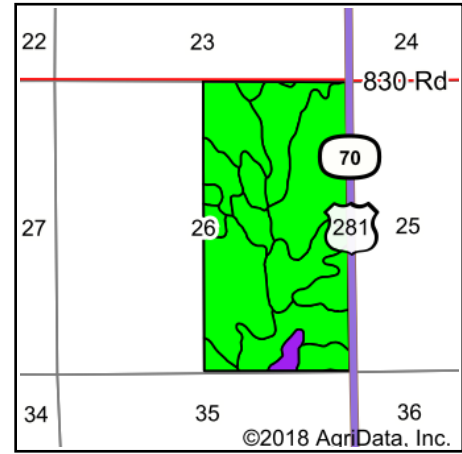
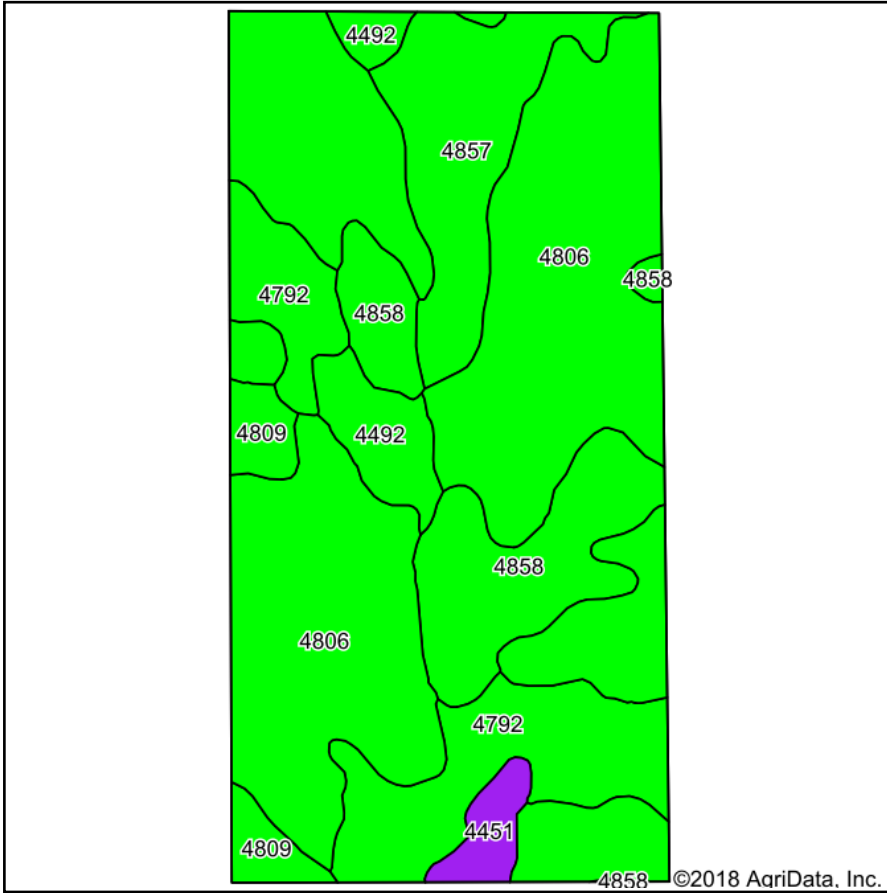


Soils Map



State: **Nebraska**
 County: **Wheeler**
 Location: **26-22N-11W**
 Township: **Bartlett**
 Acres: **314**
 Date: **2/27/2018**

Maps Provided By:

 CUSTOMIZED ONLINE MAPPING
 © Agridata, Inc. 2018 www.AgridataInc.com



Soils data provided by USDA and NRCS.

Area Symbol: NE183, Soil Area Version: 15

Code	Soil Description	Acres	Percent of field	Non-Irr Class Legend	Non-Irr Class *c	Irr Class *c	SRPG	Alfalfa hay	Alfalfa hay Irrigated	Corn Irrigated	Corn	Grain sorghum Irrigated
4806	Valentine fine sand, rolling, 9 to 24 percent slopes, moist	174.61	55.6%		Vle							
4792	Valentine fine sand, 3 to 9 percent slopes, moist	42.38	13.5%		Vle	IVe		1	3	81		
4858	Valentine-Els complex, moist, 0 to 9 percent slopes	37.65	12.0%		Vle	IVe		1	3	80		20
4857	Valentine-Dunday loamy fine sands, moist, 3-9 percent slopes	31.08	9.9%		Vle	IVe	28	1	2	65	1	
4492	Dunday loamy fine sand, 3 to 9 percent slopes, moist	13.43	4.3%		Vle					5		
4809	Valentine fine sand, rolling and hilly, 9 to 60 percent slopes, moist	9.26	2.9%		Vle							
4451	Valentine severely eroded-Valentine complex, moist 0 to 60 percent slopes	5.59	1.8%		VIIIe					3		
Weighted Average							2.8	0.4	1	27.2	0.1	2.4

*c: Using Capabilities Class Dominant Condition Aggregation Method

Soils data provided by USDA and NRCS.