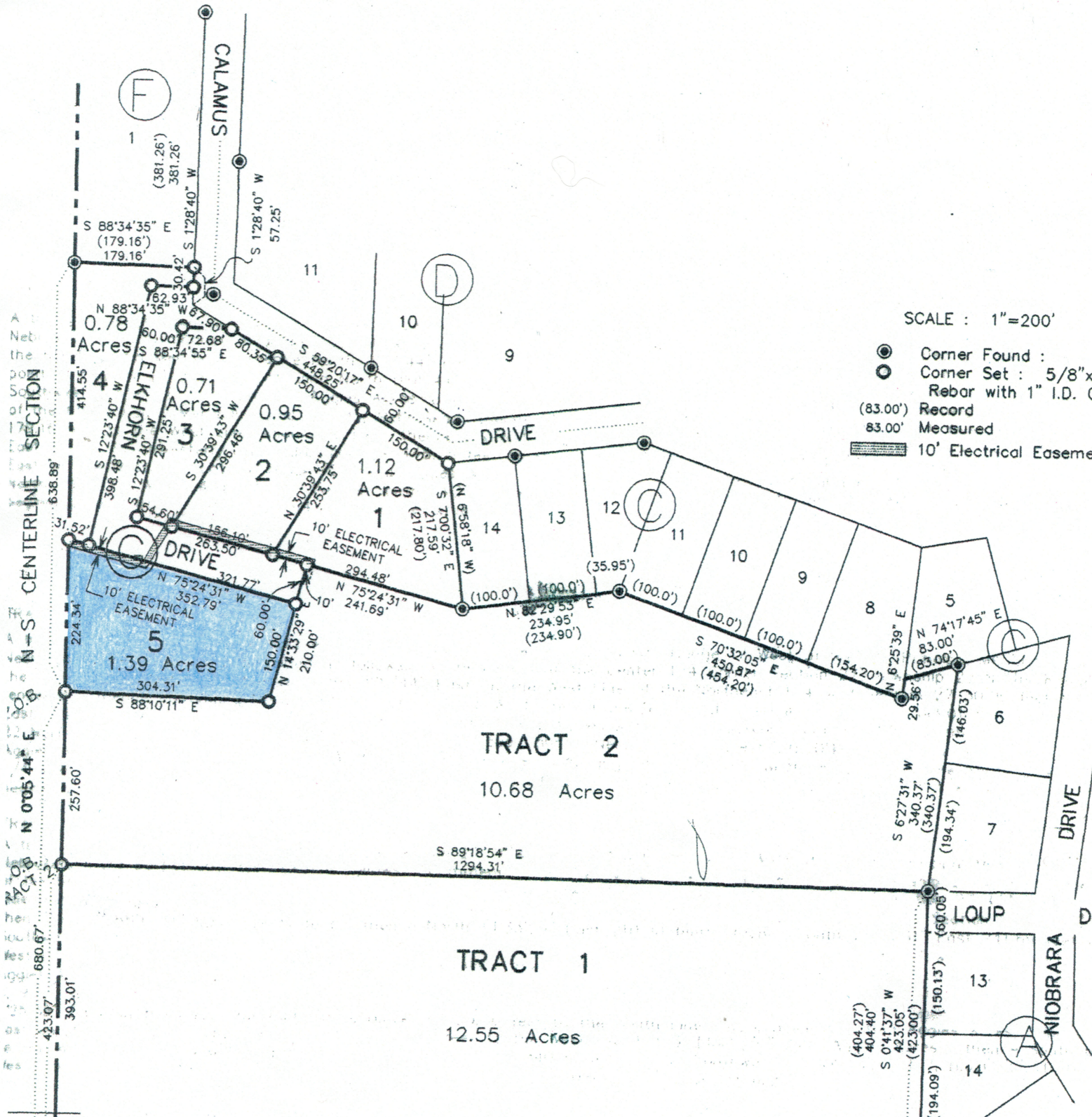


PLAT OF SURVEY

TRACTS 1 & 2, AND LOTS 1-5, BLOCK G,
AGGIES ACRES, OF PT. NE 1/4 SECTION 27,
T22N, R17W OF THE 6TH P.M.,
LOUP COUNTY, NEBRASKA



SCALE : 1"=200'

- Corner Found :
- Corner Set : 5/8"x Rebar with 1" I.D. (83.00') Record 83.00' Measured
- ▭ 10' Electrical Easement

TRACT 2

10.68 Acres

TRACT 1

12.55 Acres

N-S CENTERLINE SECTION

Net the po of 177

fes